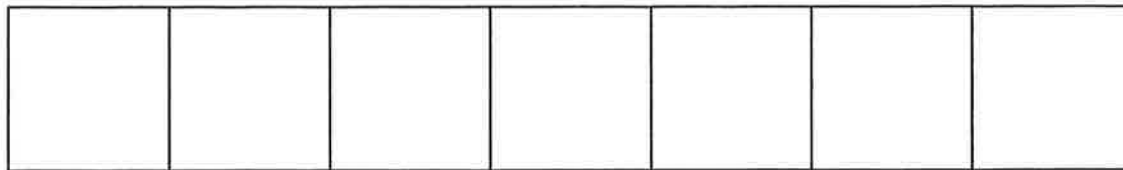
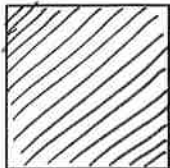


# Value Scales

**Directions:** Do **NOT** write on this handout.  
Copy the value scales below into your sketchbook.  
Create a value scale using the technique next to it.

**Tips**  
\* The more marks you make, the darker it gets.  
\* Your marks will look messy if you rush...  
Dont's Rush!

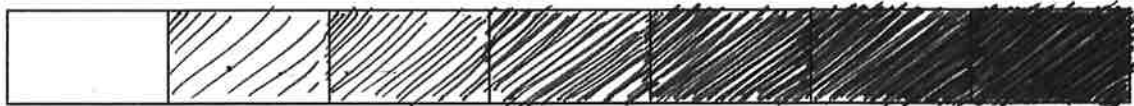
## Hatching



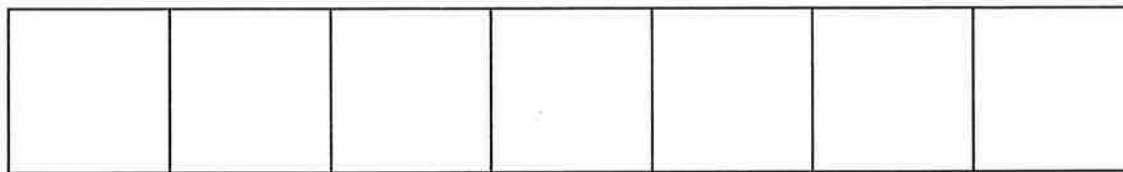
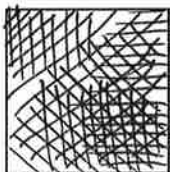
Lightest  
(White of the Paper)

Darkest  
(Spaced Filled)

Example:



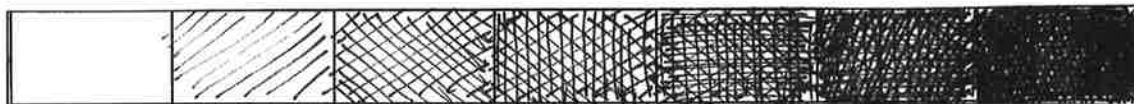
## Cross-Hatching



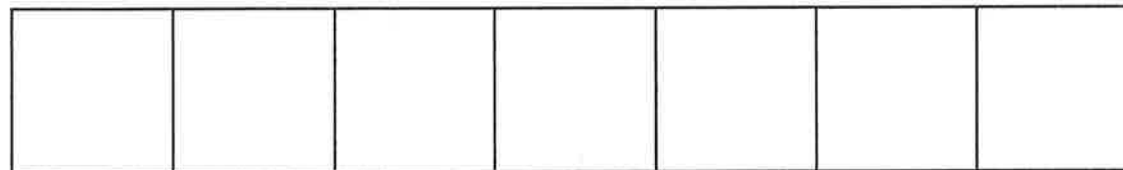
Lightest  
(White of the Paper)

Darkest  
(Spaced Filled)

Example:



## Scribble/Scumble



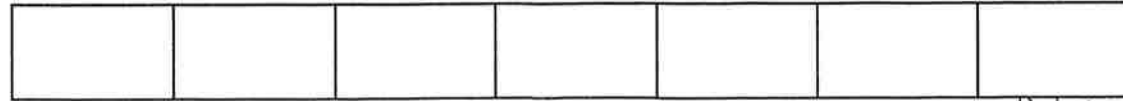
Lightest  
(White of the Paper)

Darkest  
(Spaced Filled)

Example:



## Stippling



Lightest  
(White of the Paper)

Darkest  
(Spaced Filled)

Example:



**There are many other line techniques to use.**  
**When you master the light to dark values of a technique, more possibilities open up for its uses.**