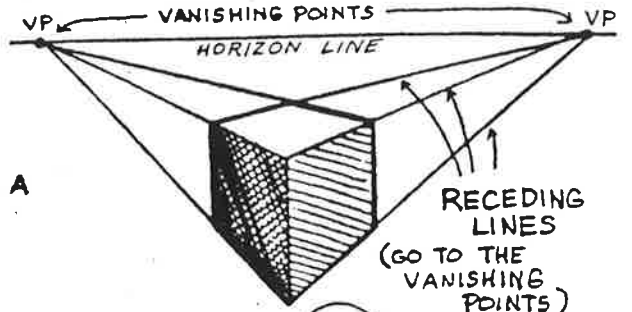


LINEAR PERSPECTIVE

ARTISTS USE "LINEAR PERSPECTIVE" (LIKE "OPTICAL PERSPECTIVE") TO SHOW DEPTH IN THEIR DRAWINGS.

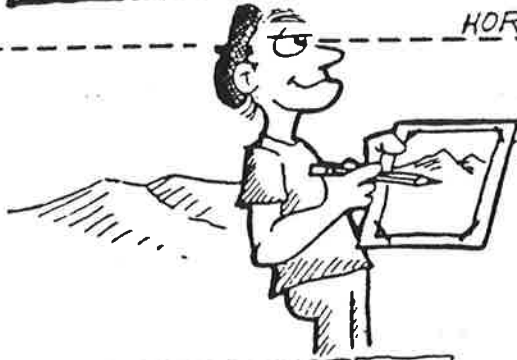
LINEAR PERSPECTIVE IS CONSTRUCTED WITH A HORIZON LINE, VANISHING POINTS, AND RECEDING LINES.



A HORIZON LINE

A HORIZON LINE IS AN IMAGINARY LINE WHICH IS LEVEL TO THE ARTIST'S EYES. IT IS SOMETIMES CALLED AN "EYE LEVEL" LINE.

HORIZON LINE



OBJECTS THAT YOU ARE DRAWING MAY RISE ABOVE OR FALL BELOW THE HORIZON LINE.

VANISHING POINTS

VANISHING POINTS ARE IMAGINARY POINTS WHERE PARALLEL LINES MEET.

VANISHING POINTS

USUALLY, (BUT NOT ALWAYS), VANISHING POINTS ARE PLACED ON THE HORIZON LINE.

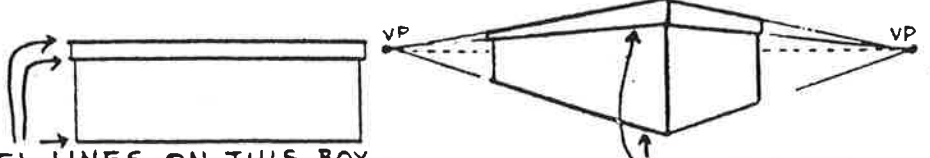


A DRAWING MAY HAVE SEVERAL VANISHING POINTS.

RECEDING LINES

RECEDING LINES ARE PARALLEL LINES WHICH COME TOGETHER AT A VANISHING POINT IN YOUR DRAWING.

FOR EXAMPLE, THE PARALLEL LINES ON THIS BOX...



BECOME RECEDING LINES WHEN DRAWN IN PERSPECTIVE.

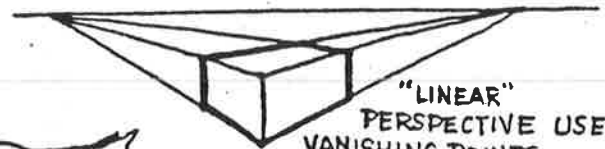
OPTICAL

PERSPECTIVE



PERSPECTIVE IS USED BY ARTISTS TO MAKE OBJECTS IN THEIR DRAWINGS LOOK CLOSER OR FURTHER FROM THE VIEWER. (DEPTH)

OPTICAL PERSPECTIVE SHOWS DEPTH BY USING VALUE (SHADING), POSITION, DETAIL, OVERLAPPING LINES AND SIZE.



"LINEAR" PERSPECTIVE USES VANISHING POINTS, A HORIZON LINE and RECEEDING LINES TO SHOW DEPTH.

VALUE

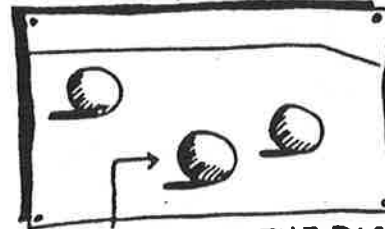


IN THIS EXAMPLE, THE "HILLS" ON THE LEFT APPEAR "CLOSER" THAN THE ONES ON THE RIGHT. (EVEN THO' THEY'RE SMALLER). VALUE (SHADING) HAS BEEN USED TO SHOW DEPTH. GENERALLY, THINGS CLOSER TO YOU ARE DARKER THAN THE SAME THINGS FAR AWAY.



POSITION

DEPTH CAN ALSO BE SHOWN BY WHERE



OBJECTS ARE PLACED ON A DRAWING! OBJECTS DRAWN TOWARD

THE BOTTOM OF THE PAGE APPEAR "CLOSER" TO THE VIEWER.

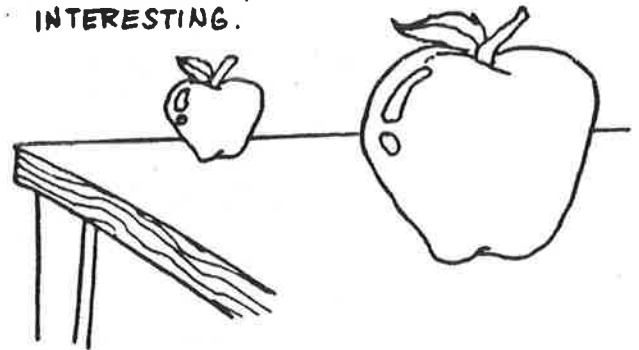
DETAIL

BY ADDING MORE DETAIL TO SOME OBJECTS IN YOUR DRAWINGS, THEY CAN LOOK CLOSER THAN OTHER OBJECTS.



SIZE

BY CHANGING THE SIZE OF OBJECTS IN YOUR DRAWINGS, YOU CAN ADD DEPTH TO YOUR WORK. REMEMBER, ADDING DEPTH MAKES YOUR DRAWINGS MORE INTERESTING.



OVERLAPPING

USING OVERLAPPING LINES TO SHOW DEDTH IS ONE OF THE EASIEST WAYS TO INCLUDE OPTICAL PERSPECTIVE IN YOUR DRAWINGS.



IN THIS EXAMPLE OF MOUNTAIN PEAKS, IT'S IMPOSSIBLE TO TELL WHICH PEAKS ARE CLOSER OR FURTHER AWAY, BUT add some OVERLAPPING LINES & NOW IT'S EASY TO TELL.